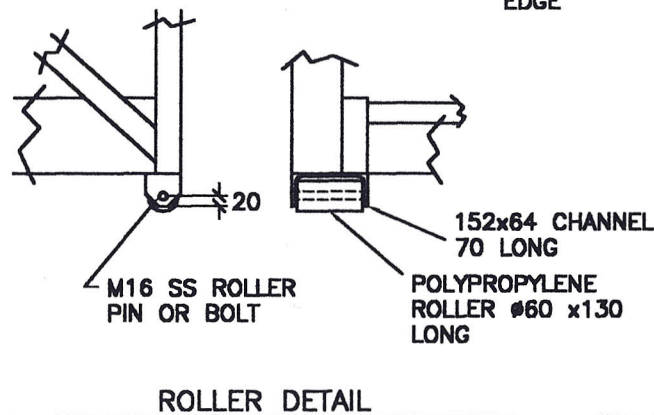
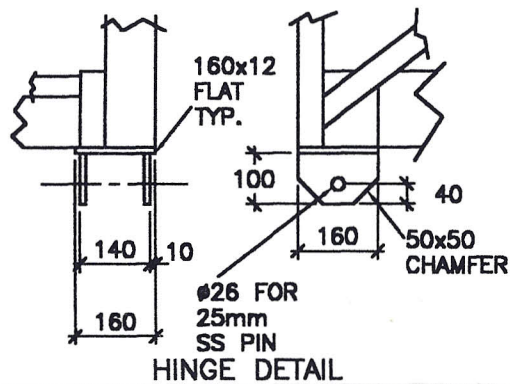
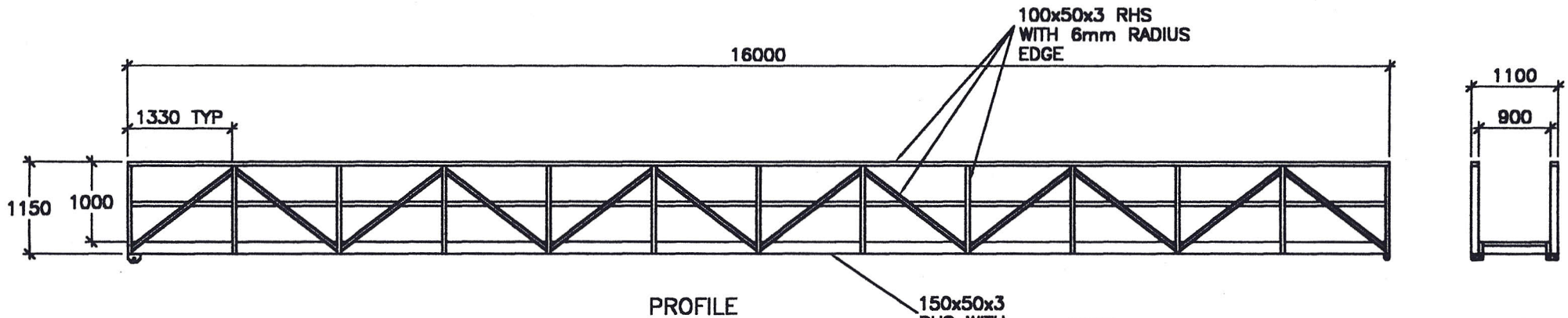
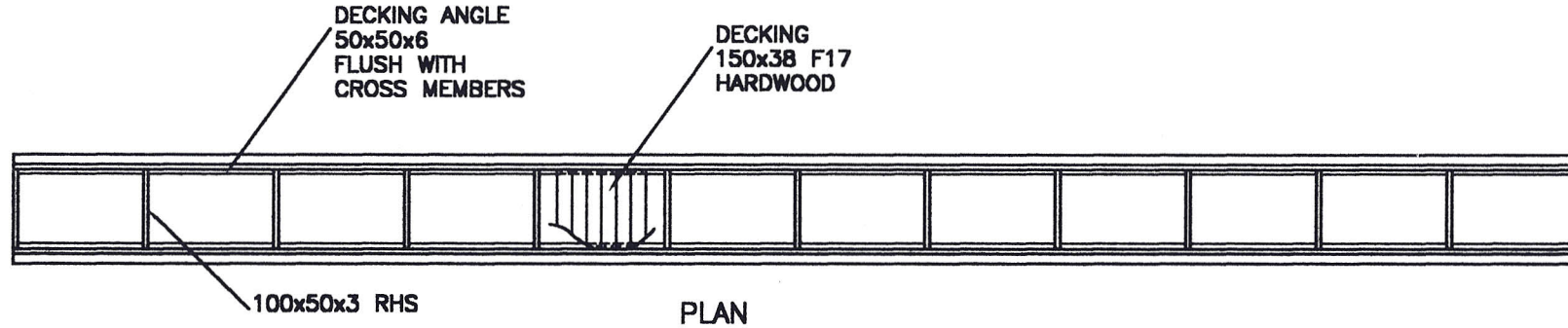


COPYRIGHT ALL RIGHTS RESERVED

DO NOT SCALE



NOTE:  
ALL ALUMINIUM EXTRUSIONS ARE TO BE OF GRADE 6063-T5  
OR EQUIVALENT.  
ALL ALUMINIUM STRUCTURES SHALL BE FABRICATED AND  
ERECTED IN ACCORDANCE WITH AS/NZS 1664:1997  
ALL WELDING SHALL BE CARRIED OUT IN ACCORDANCE WITH  
AS 1665.  
UNLESS OTHERWISE STATED, ALL WELDS SHALL BE  
CONTINUOUS 5mm FILLET WELDS.  
UNLESS OTHERWISE STATED, FILLER ALLOY SHALL BE OF  
GRADE 5356.  
WELDING SHALL BE CARRIED OUT BY QUALIFIED PERSONNEL  
WITH EXPERIENCE IN THE FABRICATION OF ALUMINIUM  
STRUCTURES.  
PERSONNEL AND PROCEDURES SHALL BE QUALIFIED WITH  
THE TESTING OF WELD SAMPLES AS SPECIFIED IN AS  
1665-1992.  
DESIGN LIVE LOAD-1.5kPa

MARINE DOCK SYSTEMS  
PTY LTD

GANGWAY  
16.0m x 0.9m

RAMP-2720



SCALE	N.T.S.	DWG	A4-2720	
DRAWN	JPM	REV	A	7,2,02
DATE	7,2,02	CHK		APP'D